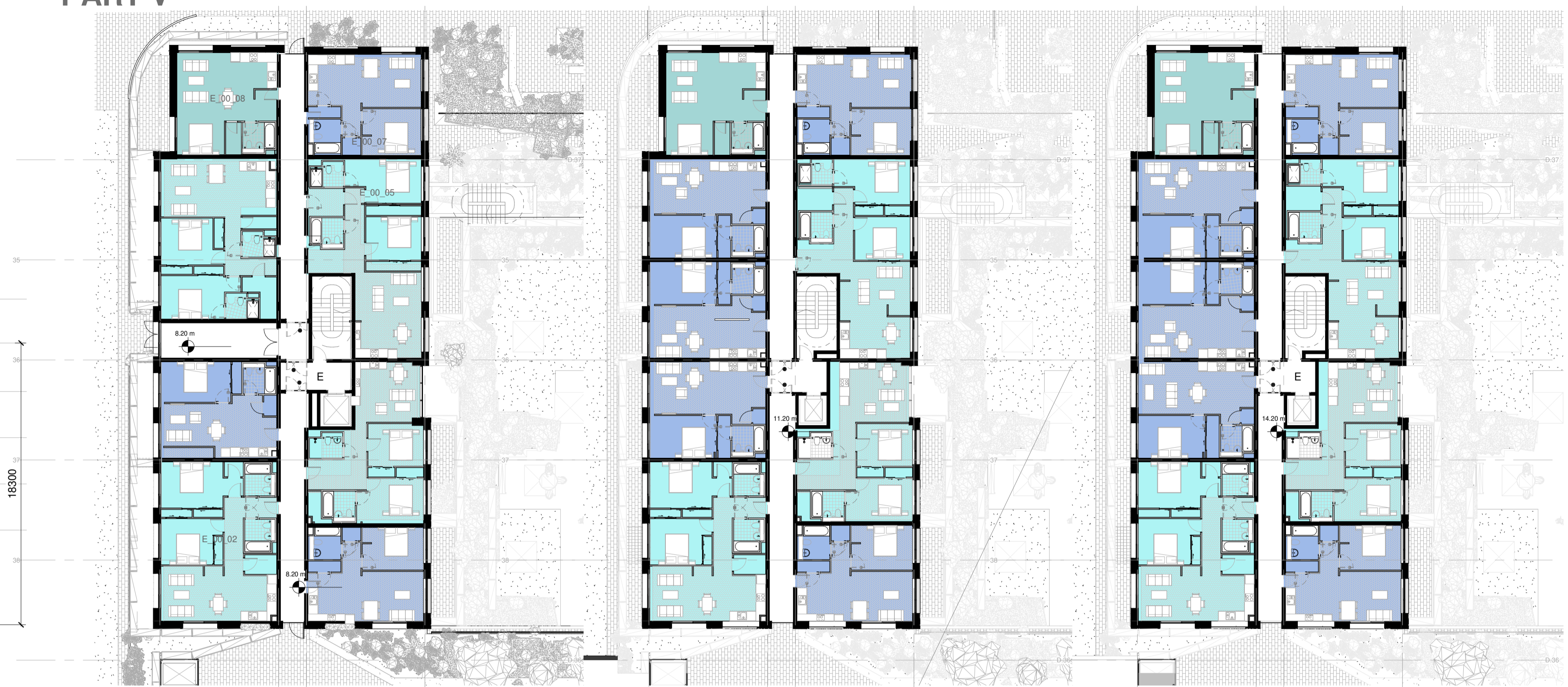
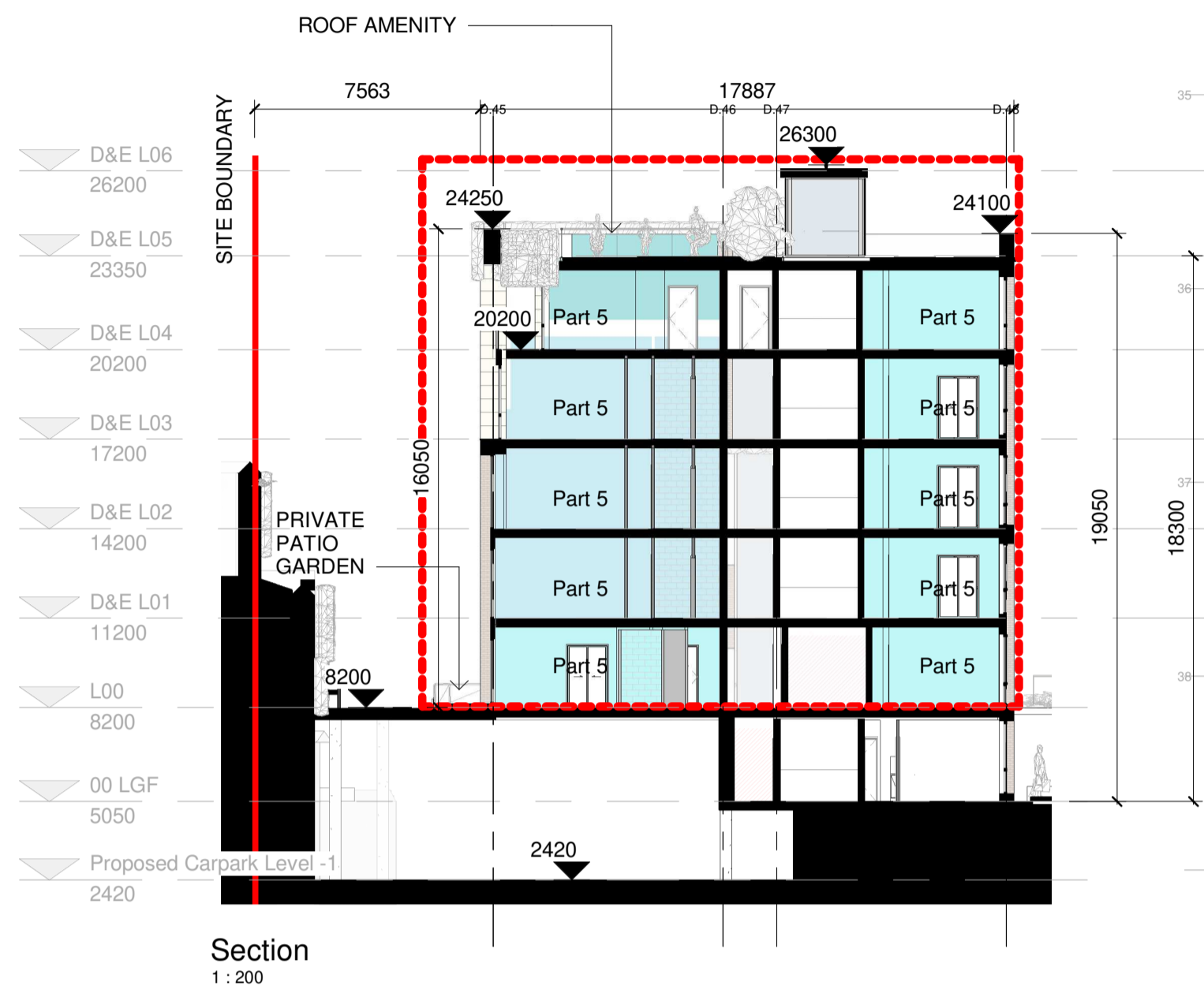


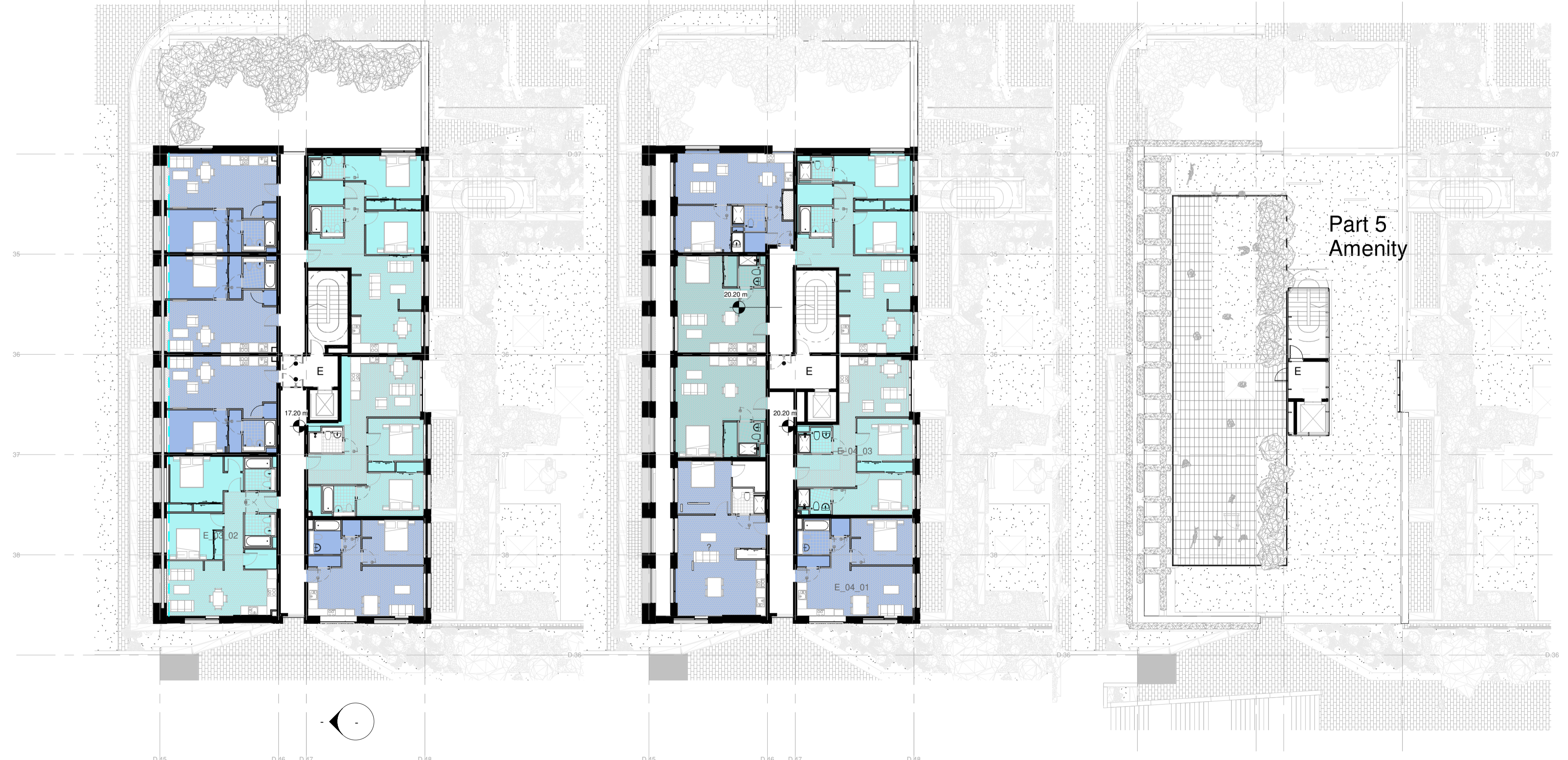
# PART V



Podium Level  
1:200

First Floor  
1:200

Second Floor  
1:200



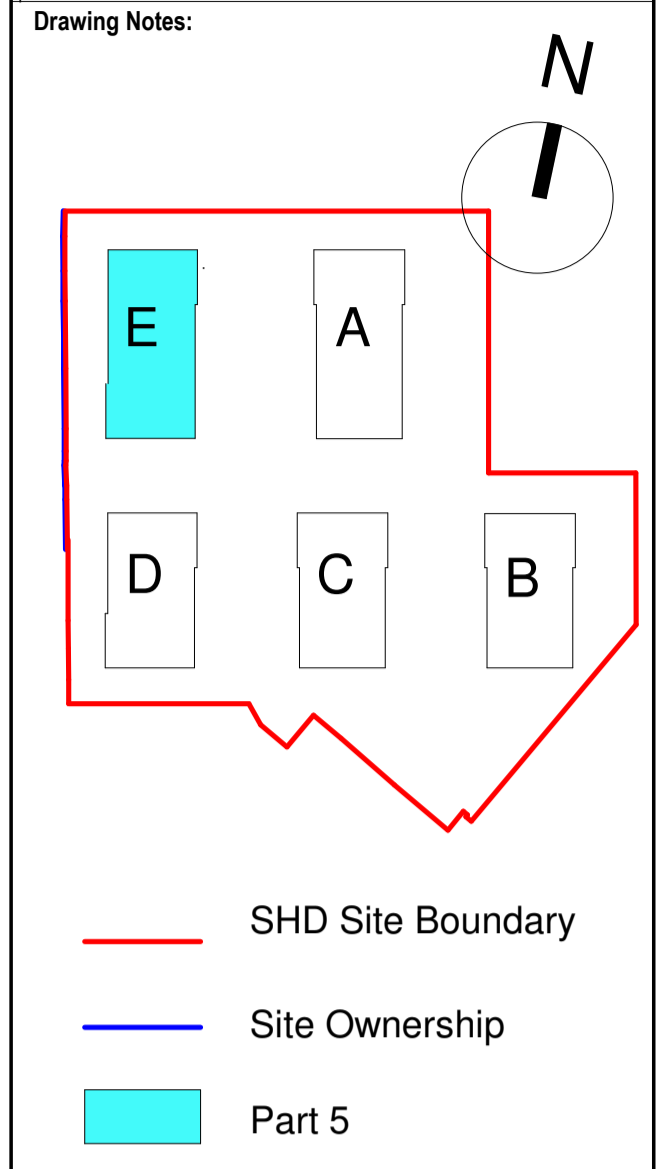
Third Floor  
1:200

Fourth Floor  
1:200

Fifth Floor - Amenity  
1:200

<b>Part V allocation - 10% of total residential GIFA =</b>					<b>2,806</b>
<b>Part 5 Schedule - Block E - excepting Lower Ground (see GA plans)</b>					
Level	Studio	1 Bed	2 Bed	Total	GIFA
Podium	1	3	4	8	620
1	1	5	3	9	620
2	1	5	3	9	620
3		4	3	7	504
4	2	3	2	7	456
<b>Total</b>	<b>5</b>	<b>20</b>	<b>15</b>	<b>40</b>	<b>2,820</b>

**Notes:**  
 - Do not scale from this drawing. Use figured dimensions in all cases.  
 - Verify dimensions on site and report any discrepancies to the Architect immediately.  
 - This drawing is to be read in conjunction with the Architect's Specification.  
 - © This drawing is copyright and may only be reproduced with the Architect's permission.



P01	02/07/21	EOB	Issued for Planning
Rev.	Date	Drawn	Details of Issue / Revision
Issues & Revisions			

W: www.reddyarchitecture.com  
 E: info@reddyarchitecture.com

**Client Details:**  
 HPREF HSQ Investments Limited

**Project Details:**  
 HSQ Feasibility  
 Heuston South Quarter, St John's Rd W,  
 Kilmainham, Dublin 8

**Drawing Title:**  
 Proposed Part V Drawing

Job No.	Sheet Size	Scale @A1:
<b>P19-213D</b>	<b>A1</b>	<b>1:200</b>
Issue Date:	Drawn By:	Reviewed By:
<b>17/09/21</b>	<b>IOB</b>	<b>EOB</b>

Status	Purpose of Issue
	<b>Planning permission</b>
Project-Originator-Zone-Level-Type-Role-Classification-Number	
<b>RAU-ZZ-00-DR-A-GAP-06130</b>	Revision
	<b>P 01</b>